



Library Guide



Library and Information Services
Cyprus University of Technology

Your learning is our priority

This guide contains necessary information regarding the use of the Library, its library services and research tools. It provides useful information on borrowing and returning material, the interlibrary loan service, educational seminars and much more. The guide also offers help on how to find printed and electronic material, how to create a bibliography and avoid plagiarism. In the last pages, you will find details about our subject librarians in order to help you with your research.



Contents

General Informations

- Library Hours	5
- Connect with knowledge	5

Services

- Borrowing	9
- Returns	10
- Late Returns	10
- Loan Renewal	10
- Reservations	12
- InterLibrary Loan	13
- Printing - copying	13
- Library 24/7	14
- Educational seminars	14

Research

- Pantognostis	19
- "My Account"	19
- E-resources	20
- E-books	20
-Institutional Repository KTISIS	20
- Plagiarism	23
- Bibliographic References	23
- Ask your Librarian	24
- Find your Librarian	26

Contacts	30
-----------------	-----------



General Informations

Library Hours

September - May

Monday - Friday: 08.30 - 22.00

Saturday: 10.00 - 16.00

June - July

Monday - Friday: 08.30 - 18.00

Saturday: CLOSED

August

Monday-Friday : 08:30 - 14:30

Saturday: CLOSED

Library hours are subject to change during exam periods and holidays

Connect with knowledge

Your University account (username and password) allows you to access:

- all computers within the University campus (class rooms, labs, Library)
- the University webmail
- the University network through wireless connection or via VPN network

The user name is the text before @ of your university email account



Services



Library Loan

User Category	Number of copies	Loan period	Loan renewal times
Academic staff	25	1 semester	3 times
Special Scientific staff	15	1 semester	3 times
Undergraduate Students	6	15 days	2 times
Postgraduate students			
MA, MSc, PhD	10	21 days	3 times
Exchange students	6	15 days	2 times
Administrative staff	6	15 days	2 times
External Users	5	15 days	1 times
Partnership Members	5	15 days	1 times
Graduates	6	15 days	2 times

Returns

You can return your loans ;

- at the Circulation and Information Desk
or
- using the self service machines

Library users are responsible for all items checked out on their Library card and will be charged for the replacement of all non-returned and damaged items

Late Returns

An overdue fine is imposed on each and every loan item and accompanying library material returned late.

When a fine is pending you will be unable to borrow, renew or reserve any library materials

Loan Renewal

Borrowed material can be renewed by the due date in order to extend the loan period:

- at the Circulation Desk
- online renewal using My Library Account
- calling to 25002518
- by e-mail on library@cut.ac.cy

Items cannot be renewed if:

- the loan period has expired
- there is a pending fine
- another user has placed a hold on the item

Please note that Short-Loan items are not renewable



Let others wait in queue!

Why pay if you can avoid it?

- return your loans on time
- regularly check your email inbox
- check "My Account" from the Library's website and renew your loans before the due date

Do not forget:

- to inform your Library if you change your contact details
- it is forbidden to lend the books borrowed in your name to other people

Reservations

The following apply to borrowed materials.

Reservations can be made:

- at the Circulation Desk with your Library card
- online through the Library's catalogue by selecting the command "Hold"

Reservations are not permitted for Short Loan materials

Inter Library Loan (ILL)

If a book or article cannot be found in the Library, you must complete the online registration form available at the CUT Library website.

The CUT Library will request it on your behalf from another library via the ILL service.

Printing-Photocopying

The Library provides self-service printers and photocopyers for the convenience of its members by using their student card.

How to activate your card

- swipe the card on the card reader of the photocopying machine
- write down the 8-digit PUK code that has been sent to your e-mail and then click OK

You can add credits to your student card from the special machines within the University premises

Fair use of copyrighted material: the Copyright Law governs the making of photocopies or other reproductions of copyrighted material. The person using this equipment is liable for any infringement

Library 24/7

The Library is accessible from your home!

- go to the address <https://vpn.cut.ac.cy> to connect to the University network
- select the appropriate group to which you belong
- enter your username and password
- click on connect button

Educational Seminars

The CUT Library provides training seminars throughout the academic year:

- Library tours
- Federated Search Tool (Pantognostis): learn how to search all the library resources simultaneously
- how to use e-books
- how to use e-journals
- how to use databases
- Mendeley: useful guidelines for locating and creating bibliography for your research

Ask your Librarian to book a seminar





Research



Pantognostis

Pantognostis

(<http://pantognostis.cut.ac.cy>)

Central search engine for:

- simultaneous search in all the Library collections (print books & journals, databases, e-books, e-journals and audiovisual material)
- access to the full text of articles and e-books
- information on the availability of the material and their position on the shelves
- exporting bibliographies using the Mendeley tool
- the ability to limit results according to the type of material, the publication date, language
- connecting to "My Account"

«My Account»

Use the barcode of your student card and the six last digits of your PIN. This allows you to:

- see the books you have borrowed
- renew borrowed books
- reserve already borrowed
- check the date of return in order to avoid a fine
- create your own lists from the Pantognostis portal
- add tags to characterize the material of the Library
- evaluate your favorites
- make suggestions for new purchases to your library

E-resources

When you do your research is better to use articles and other scientific materials which can be found in:

- databases
- electronic journals
- electronic books
- open access resources

Electronic books (ebooks)

Take advantage of the benefits that e-books gives you:

- no need to borrow them for reading
- you can add notes and comments
- accessibility by many readers simultaneously
- e-books are searchable
- ability to use quotes and passages directly in your work

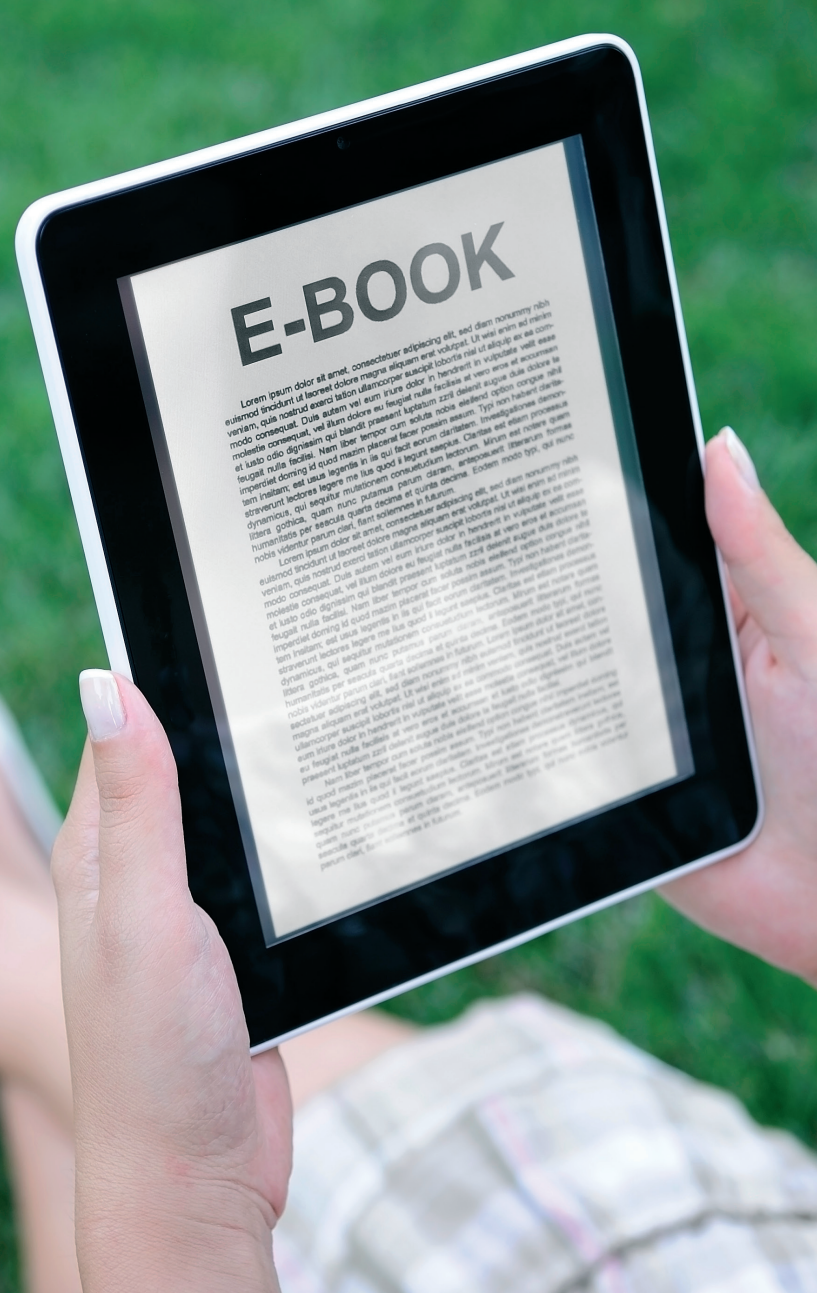
Tutorials will facilitate your search!

Institutional Repository KTISIS



The Open Access Repository of KTISIS provides an important part of the scientific and research activity of the university community, such as:

- CUT academic publications
- Dissertations
- Master theses
- Phd theses





Plagiarism

The term refers to the appropriation of a part or the whole project ideas or perceptions of other authors. Avoid plagiarism using references and citations according to the bibliographic standard set by your teacher:

*Consult the Guide Writing Dissertation and Theses
(<http://www.cut.ac.cy/library/etds/>)*

Creating bibliographic references

The bibliography is considered necessary to ensure the authenticity and legality of the ideas and concepts of the researcher. The use or quotation of ideas or part of the original copyrighted work, should be accompanied by the reference with the necessary bibliographic information.

In your Library you will find Mendeley, a tool for organization and management of bibliographies and references (<http://www.mendeley.com/>)



Ask your Librarian

This service is offered by the Subject Librarians to guide the user on, how to identify and seek scholarly articles, how to create bibliography and write a scientific paper:

In a specially designated area of the library, Subject Librarians are available among users to answer their questions, while arranging individual or group seminars.

Consult your Librarian for

- material search strategies
- educational seminars
- expert help in your topic
- creating references and bibliography
- avoiding plagiarism
- writing dissertation

Contact your Subject Librarian by phone, email, Skype or make an appointment



Find your Librarian

Faculty of Geotechnical Sciences and Environmental Management	Fotini Nikolaidou	e: fotini.nikolaidou@cut.ac.cy t: 2500 2384
Faculty of Management and Economics	Nasia Panagiotou	a.panagiotou@cut.ac.cy tel: 25002576
Faculty of Health Sciences	Michael Ktoris	michaelktoris@cut.ac.cy τηλ: 25002367
Faculty of Communication and Media Studies	Athina Evagorou	athinola.evagorou@cut.ac.cy τηλ: 25002405
Faculty of Fine and Applied Arts	Athina Evagorou	athinola.evagorou@cut.ac.cy τηλ: 25002405
Faculty of Engineering and Technology	Anna Charalambous	anna.charalambous@cut.ac.cy tel: 25002424
Language Centre	Michael Ktoris	michaelktoris@cut.ac.cy tel: 25002367
Cyprus International Institute for Environmental and Public Health	Michael Ktoris	michaelktoris@cut.ac.cy tel: 25002367





Find us





Library (Vasilis Michaelides Building)
1 Nicolaou Xiouta, 3036 Limassol
PO.Box 50329, 3603 Limassol

Library-Administration Offices
38 Kitiou Kyprianou, 3041 Limassol
PO.Box 50329, 3603 Limassol

Contacts

- Tel.: +357 25002518
- Fax: +357 25002761
- e-mail: library@cut.ac.cy
- Live chat via website

Follow us on

-  Cyprus University of Technology Library
-  <http://athena.cut.ac.cy/actadiurna/>
-  Cyprus University of Technology Library
-  @LibraryCUT

Visit the Library website <http://www.library.cut.ac.cy>

Library staff

Library Director

Marios Zervas

Tel: 25002522

Email: marios.zervas@cut.ac.cy

Assistant Officer

Marina Antoniou

Tel: 25002224

Email: marina.antoniou@cut.ac.cy

Quality Management Office

Myroulla Akroteriatou

Tel: 25002573

Email: m.akroteriatou@cut.ac.cy

Acquisitions Office

Maria Haraki

Tel: 25002574

Email: maria.haraki@cut.ac.cy

Eleni Kamberi

Tel: 25002073

Email: eleni.kamberi@cut.ac.cy

Stephanie Liasi

Tel: 25002259

Email: stephanie.liasi@cut.ac.cy

Pavlos Metaxas

Tel: 25002199

Email: pavlos.metaxas@cut.ac.cy

Cataloguing Office

Antonia Nicolaou

Tel: 25002408

Email: antonia.nicolaou@cut.ac.cy

Barbara Aristidou

Tel: 25002565

Email: barbara.aristidou@cut.ac.cy

Kyriaki Kokkinovou

Tel: 25002260

Email: k.kokkinovoukkou@cut.ac.cy

Vana Anastasiadou

Tel: 25002279

Email: vana.anastasiadou@cut.ac.cy

Circulation Office

Valentina Papatheodorou

Tel: 25002347

Email: v.papatheodorou@cut.ac.cy

Panikos Kyprianou

Tel: 25002366

Email: panikos.kyprianou@cut.ac.cy

Maria Kyprianou

Tel: 25002104

Email: maria.kyprianou@cut.ac.cy

Chrysanthi Stavrou

Tel: 25002509

Email: chrysanthi.stavrou@cut.ac.cy

Information Technology Office

Alexia Kounoudes

Tel: 25002568

Email: alexia.kounoudes@cut.ac.cy

Petros Artemi

Tel: 25002567

Email: petros.artemi@cut.ac.cy

Digitalization and Archives Management Office

Gregoria Evripidou

Tel: 25002425

Email: gregoria.evripidou@cut.ac.cy

Stamatios Giannoulakis

Tel: 25002180

Email: s.giannoulakis@cut.ac.cy

Subject Bibliographic Support and Collection Development Office

Athina Evagorou

Tel: 25002405

Email: athinoula.evagorou@cut.ac.cy

Anna Charalambous

Tel: 25002424

Email: anna.charalambous@cut.ac.cy

Michael Ktoris

Tel: 25002367

Email: michael.ktoris@cut.ac.cy

Fotini Nikolaidou

Tel: 25002384

Email: fotini.nikolaidou@cut.ac.cy

Athanasia Panagiotou

Tel: 25002576

Email: a.panagiotou@cut.ac.cy

Discover your library, inform yourself !

Edit Diligence | Coordination:

Marianna Orati

Proofreading

Group Publications Library

Σχεδιασμός:

Eleftheria Iasonos

Connect with knowledge

<http://library.cut.ac.cy>